



**BREST
BUSINESS
SCHOOL**

INTERNATIONAL STUDENT HANDBOOK



2024 - 2025

© Eugénie Ragot



TABLE OF CONTENT

Part 1

Welcome aboard !

- Brest Business School at a glance
- International office

Part 2

Get ready for France !

7

- Book your accommodation
- Get your visa and resident permit

Part 3

Upon your arrival

13

- Get your CVEC
- Open your bank account
- Register for health and insurance

Part 4

Life in Brest

18

- Life in Brest
- Focus on « La pointe du petit Minou »
- Address book

Part 5

Appendices

23

- Online enrolment procedure
- BBS academic calendar
- Plan of BBS
- How to get to Brest
- Public transportation
- Useful information

WELCOME TO

BREST

BUSINESS

SCHOOL

BREST BUSINESS SCHOOL



BREST BUSINESS SCHOOL AT A GLANCE



The school is located in a modern and spacious building with a total surface area of 9.300m². There are over 300 parking spots, and the school is 5 km from the city center and 2 km from the nearest shopping center. Public transport stops are 2 minutes walk from the campus.

WELCOME ABOARD !



Brest Business School designs and delivers relevant and effective academic degree programs to prepare its students to be responsible managers and entrepreneurs in a global environment, complemented by applied research activities to create economic and social value for its regional stakeholders.

Recognized by the « Ministère de l'Enseignement Supérieur, de la Recherche et de l'innovation » (the French Higher Education Ministry) since its creation in 1962, Brest Business School is also a member of the « Conférence des Grandes Écoles ». It proposes unique programs, in particular Apprenticeship schemes.

Brest Business School is proud of being a truly international School of Management with more than 65 international partner schools and universities worldwide.

School facilities

All students, including international students, will enjoy a special BBS platform - a useful tool with personal space, time schedules of disciplines etc. Also, they will be given a personal e-mail address, which they may use during their period of study at Brest Business School.

Besides, the school has the following facilities:

- 3 amphitheatres
- Language and multimedia laboratory
- Restaurant
- All classrooms equipped with video projection systems / video conferencing system available



Library

Library collection:

- Over 8.500 printed and electronic books
- Over 130 printed and online magazines
- Thousands of text books and articles are available on the electronic database such as Business Source Complete from EBSCO, the digital library Scholarvox from Cyberlibris and on Cairn, an online collection of French publications in social sciences and humanities.
- Over one million accessible statistics and facts through the statista database.



Opening hours change sometimes, please contact the library directly.

- Contact: ld_infotheque@brest-bs.com

BBS Incubator



Develop your entrepreneurial spirit and project with the Incubator « Produit en Bretagne » - BBS. Established in 2006, our incubator is one of the first in higher education in France:

- Coaching and supporting for your business creation project
- Pre-incubation space within the « Espace Entreprises »
- Ability to work on your project as part of your studies

BIG AFFAIR
carry your dreams



A FEW FIGURES

4 CAMPUSES

in Brest, in Paris, Pekin & Qingdao

10 000

graduates in the

Alumni network

5 600

students

spread around the world

IN BREST

Campus area:

9 300 m²

60%

of students are international

20

permanent teacher-researchers

65 international partners

400

partner companies

130 □ **200**

students on apprenticeship contract

internship students

INTERNATIONAL OFFICE

Main contacts for the international degree seeking students :



Marie-Anne LE SQUEREN

Head of International
Relations Office



Mickaël COLIN

International Recruiting
Officer



Brigitte CHAUSSEPIED

International Recruiting
Officer

For any question, please contact

dri@brest-bs.com

GET READY

FOR

FRANCE !

BREST BUSINESS SCHOOL

BOOK YOUR ACCOMMODATION



You may find multiple opportunities for your living in Brest, such as renting a modern apartment in the picturesque centre of Brest, or renting a room or sharing a flat in student residences.

To apply for visa, you will need your valid accommodation reservation.
Please book your housing in advance.



Brest Business School has a special partnership with Studapart housing platform:

<https://brest-bs.studapart.com/en/>

Book your accommodation with Studapart and enjoy exclusive conditions



Streamlined steps



100% verified ads



Seamless support, even after booking

Renting specifics in France :

It is compulsory to have a guarantor to rent almost any type of housing.

Studapart is a partner with Allianz and can become your guarantor during the whole duration of your rent.



©Mathieu Le Gall



1. HOUSING INSURANCE

If you don't have this insurance, the landlord has the right to refuse your access to the apartment. This insurance costs around 91 € for a year. Before signing the insurance contract, please check first with your landlord that this insurance is not already included in the rent.

2. DEPOSIT

This deposit usually corresponds to one month rent. It covers the landlord in case you damage the apartment. This deposit is to be paid before or upon arrival and it will be given back to you after you have checked out. However, by law, the landlord has 2 months to return your deposit. Important: the deposit does not stand for the last month rent and is not meant to be used as such.

3. CHECK-IN

You must check-in with your landlord on the day of arrival. This involves an inventory of the furniture and equipments. Check everything in the room (wallpaper, windows, bathroom facilities etc.) and sign the document, you and the landlord will keep a copy each.

4. CHECK-OUT

Check-out with your landlord before leaving the room is mandatory. You are expected to leave the accommodation as you found it. All accommodation will be inspected, and extra cleaning or repairs will be at your own expenses.

Depending on the semester dates, there may be a short period of time for which you will have to pay for accommodation even though it is unoccupied.

Notice Period by type of accommodation:

- 3 months for unfurnished accommodation
- 1 month for furnished accommodation/ University Housing.

We would also like to remind you that it is essential to give the notice on time because if you move out before the term, you will lose your deposit and that month rent.

5. HOUSING BENEFIT

International students have the right to apply for housing benefits (CAF), which covers 30 % to 40 % of the rent. If you are eligible for housing benefit, you will receive a monthly allowance.

Please note that:

- You must apply online via www.caf.fr as soon as possible (on the first week of arrival in Brest). BBS ISA (International Student Association) can assist you.
- Housing benefits are not paid for the first month.
- If you live in University residence, payments will be made directly to the University residence, thus your rent will therefore be reduced in accordance.

Documents required to apply

- Identity card or passport,
- Certified translation of your birth certificate (dated less than 3 months),
- Official family record book if you have children,
- Health insurance card,
- Copy of the visa validation ("VLS-TS") if you are Non-European,
- French bank details (= IBAN) no payments can be made on a foreign bank account
- Proof of income,
- Special form signed by the landlord.

NB: These documents may be asked more than once as CAF is doing many controls.

At the end of the semester/year, you will have to inform CAF that you are leaving France and notify your French bank of your departure so that they can close your bank account after you receive the last CAF payment.

6. NOISE AND PARTIES

You must take good care of the accommodation and respect your neighbors. In France, you are not allowed to disturb your neighbors, after 10:30 pm. If neighbors call the police, you might be fined.

RECOMMENDED HOTELS IN BREST

HOTEL SAINT LOUIS

6 rue Algérisas
29200 Brest
02 98 44 23 91
www.brest-hotel.com

HOTEL DE LA GARE

2-4 Boulevard Gambetta
29200 Brest
02 98 44 47 01

PREMIÈRE CLASSE

ZI de Kergaradec
30 bis avenue Baron Lacrosse
29 850 Gouesnou
08 92 23 48 14
www.premiereclasse.com

REAL ESTATE AGENCIES

OCEANIC IMMOBILIER

22 rue de Lyon
29200 BREST
02 98 33 10 33
contact@oceanicimmobilier.com

LE MARTRET IMMOBILIER

44 rue du Château
29200 BREST
02 98 44 38 10

IROISE IMMOBILIER

13 place de la Liberté
29200 BREST
02 98 43 29 00

USEFUL WEBSITES

When booking accommodation online watch out for fraudulent advertisements and scams! The above information is indicative only and is in no way contractual.

ÉTUDIANT.GOUV

Website published by the Ministry of Higher Education, Research and Innovation and the Crous. This service allows you to make appointments in all areas of student life (housing, aid and social action, etc.) mainly with the services of the Crous but also the associated educational institutions.

VISALE

The Visale Guarantee is a scheme of the Action Logement group. It is a French social tool, the aim of which is to promote access to housing so that it is no longer an obstacle to access to employment. It is financed to the tune of 130 million euros by Action Logement.

LE BON COIN

Leboncoin is a consumer platform that essentially puts professionals and individuals in France in touch with each other who want to give, sell, rent or buy. This platform will allow you to find an apartment for rent.

LE TELEGRAMME

Le Télégramme is a French regional media from Brittany, based in Morlaix. Real estate ads from individuals and professionals are published in this newspaper, in paper version or on the website.

LOKAVIZ

Developed by the CROUS, national organizations that manage university residences, Lokaviz is a search engine that allows students to find, all over France, independent or homestay accommodation, a shared flat or a rent for services

OUEST-FRANCE

Ouest-France is a French regional daily newspaper, published in Rennes and sold in the western regions of France as well as in Paris. Real estate ads from individuals and professionals are published in this newspaper, in paper version or on the website.



©Danièle Nguyen Duc Long



GET YOUR VISA & RESIDENT PERMIT

Before starting your journey to France, please visit the French embassy and CAMPUS FRANCE websites of your country of origin, for any information you should know about travelling to France.

1. EUROPEAN UNION CITIZENS

Do not require a visa to enter France. A valid ID card or passport is sufficient.

2. NON-EUROPEAN UNION CITIZENS VISA PROCEDURE

For a study period of over three months in France, non-EU students from the list of countries below have to apply for a visa: Algeria, Argentina, Benin, Brazil, Burkina-Faso, Cameroun, Chile, China, Colombia, Congo-Brazzaville, Gabon, Guinea, India, Ivory Coast, Japan, Korea, Lebanon, Madagascar, Mali, Mauritius, Mexico, Morocco, Peru, Senegal, Syria, Taiwan, Tunisia, Turkey, USA, Vietnam, Egypt, Togo, Iran, Mauritania, Indonesia.

Students must register through the CAMPUS FRANCE office in their country of origin to apply for a visa.

If you are from one of the countries listed above, it is mandatory to register online on www.campusfrance.org in order to begin the visa procedure. You are required to pay for this registration.

On the website, you will be required to create your own personal file and then tick Brest Business School as your chosen school.



Then, you will have a mandatory appointment with CAMPUS FRANCE who will review your application. If your application is accepted, you will then be able to proceed to apply for the visa at the French Consulate.

Please visit the CAMPUS FRANCE website in order to find out more about this process (<https://www.campusfrance.org/fr>).



3. STUDENTS FROM OTHER NON-EUROPEAN COUNTRIES

Must apply for the visa directly with the French Consulate in their country of origin.

4. VISAS DELIVERED BY FRENCH CONSULATES

Non-European students need to apply for a long-stay visa (VLS) through the French Consulate in their home country. They must not apply for a tourist visa. There are different types of visas which may be granted to Non-European students.

Visa D – Temporarily exempted of a residence permit (Not required to apply for a residence permit)

Students with this visa are not required to apply for an additional resident permit in France.

However, if they want to extend their study in France, it is not possible to renew it whilst in France, they must leave France and request another visa. Furthermore, this visa does not allow you to work and to benefit from benefits package.

Most Canadian students get this visa with the mention "Échanges de Jeunes/Canada – 2B" as French and Canadian governments have established partnerships.

Visa D – CESEDA R311-3-6 Authorized limited work 60% legal duration

Most non-European students receive this visa. In this case upon your arrival in France, you must validate your long-stay visa valid as a residence permit (VLS-TS, visa long séjour valant titre de séjour).

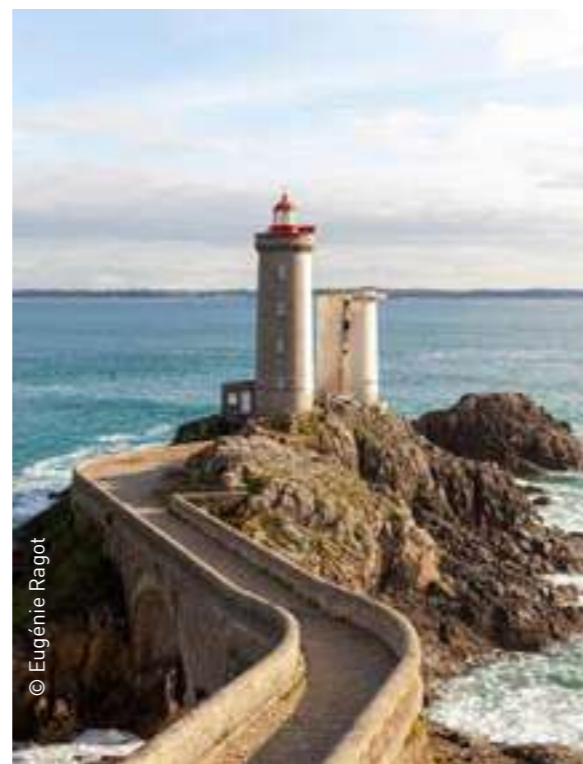
The process is entirely digital: you can do everything remotely, at home, on your computer. You must validate your visa within 3 months of arriving in France at the very latest.

To do so, visit the following website: <https://administration-etrangers-en-france.interieur.gouv.fr/>

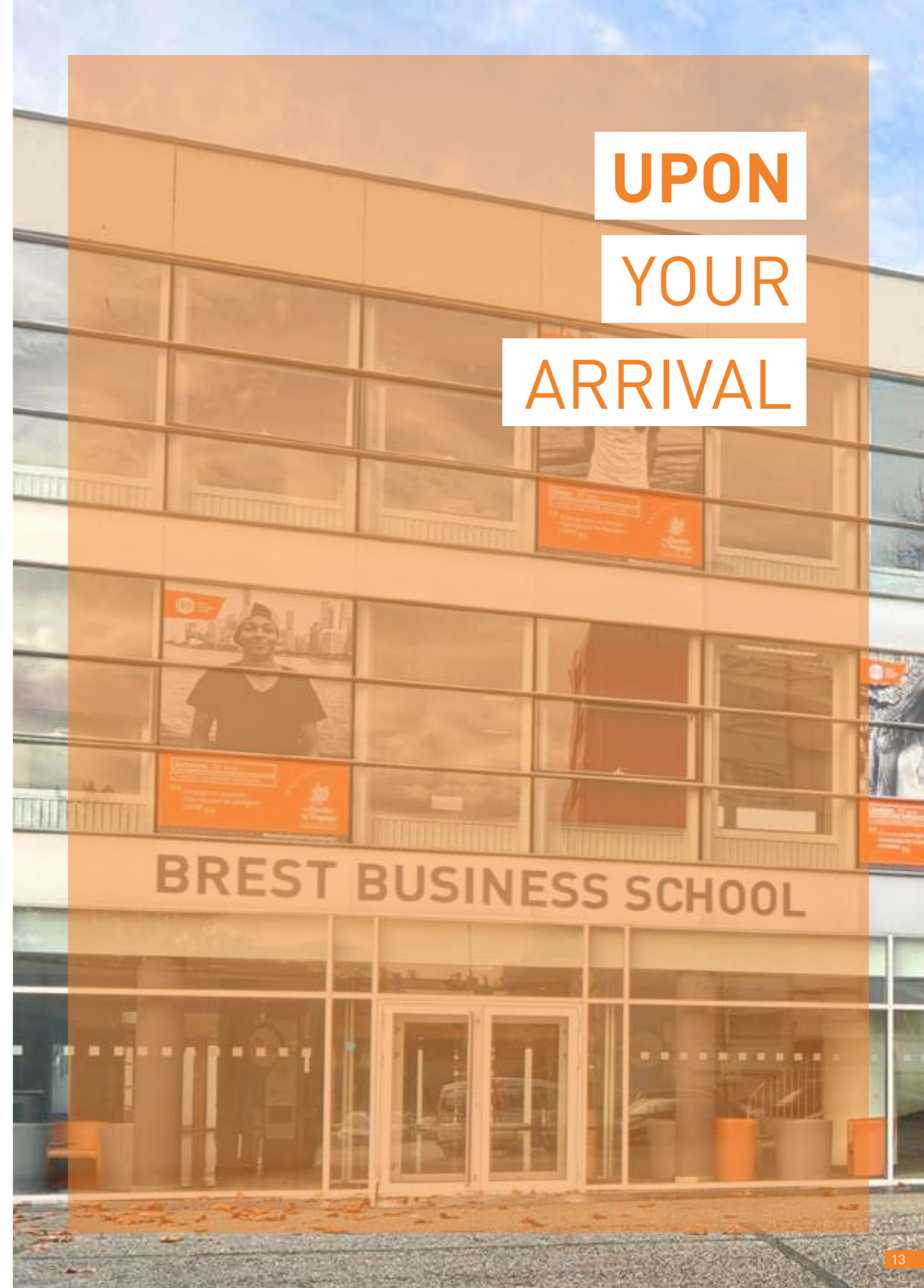
In order to have your visa validated you will need to:

- Log in on the website <https://administration-etrangers-en-france.interieur.gouv.fr/>;
- Enter the information on your visa: visa number, date of beginning and end of validity, date of issue, reason for stay;
- Enter the additional information: family circumstances, telephone number, email address;
- Indicate your date of arrival in France and your address in France;
- Pay the stay tax of 50 euros: you can buy the stamp online or at a kiosk in cash

Please bear in mind that you must validate your VLS-TS visa within 3 months of arriving in France. This entitles you to lawfully remain in France for your visa's entire validity period and leave France, beyond the 3 months following your arrival, without asking for a visa to come back.



UPON
YOUR
ARRIVAL



GET YOUR CVEC

WHAT IS CVEC?

The "Student success and orientation" law (loi "ORE") presented by the government has established a Student Life and Campus contribution (CVEC) : 100€ for academic year 2022-2023, the start of collections is May 2nd, 2023.

This annual contribution is mandatory and aims to strengthen the social, health, cultural and sports support of students, as well as to reinforce prevention and health education actions carried out for them.

Subject to the situations defined below, all students registered or in the process of being enrolled, must pay this amount to the CROUS via the website: <https://www.messervices.etudiant.gouv.fr/>

Make sure you have your visa before paying CVEC.



PLEASE NOTE THAT

- CROUS scholarship students, refugees, beneficiaries of subsidiary protection or who are registered as asylum seekers are exempt: however, they must complete the online procedure on the website in order to obtain an acknowledgment of payment by exemption.
- Exchange students within the framework of an institutional agreement, who undertake a period of mobility in France, are not subject to the CVEC: No action required.

Once the CVEC payment has been carried out, the attestation of payment has to be downloaded on your online administrative registration. From then on only, you will be able to ask for your school certificate.



OPEN YOUR BANK ACCOUNT

You are strongly advised to open a current bank account upon arrival in Brest. You will need it for Health Insurance application and for your everyday life in France. Remember that at the beginning there are often larger expenses such as paying rent in advance as deposit.

Brest Business School's banks partnerships



Crédit Mutuel de Bretagne
Agence de Bellevue,
3 place Napoléon III,
29 200 Brest
02 98 01 22 35
www.cmb.fr



Crédit Agricole
Agence de Brest,
3 avenue Clémenceau,
29200 Brest,
02 98 32 05 80
www.ca-finistere.fr



BNP Paribas
Agence de Brest,
16 avenue de Tarente,
29 275 Brest,
02 98 01 86 00
www.mabanque.bnpparibas/



Société Générale
Agence de Brest,
72 Rue de Siam,
29200 Brest
02 98 00 57 00
www.societegenerale.com

REGISTER FOR HEALTH & INSURANCE

1. MANDATORY FOR ANY STUDENTS

You will need to register on the dedicated students website in order to be covered for your medical expenses when you arrive in France. You will also need to do so if you are a French citizen living in New Caledonia or Wallis and Futuna, or if you were born abroad.

2. REGISTER ONLINE TO FRENCH SOCIAL SECURITY

The registration process is done online through the dedicated website : <https://etudiant-etranger.ameli.fr>

If at the time when you register online, you do not have an official certificate of enrolment (attestation de scolarité), your admission letter/certificate of pre-enrolment will be accepted for your temporary social security registration. Then once you have the official attestation on hand, you'll just have to replace the previously uploaded one.

TIPS

Make sure to watch the **video tutorial** to familiarize yourself with the « assurance maladie » system and how it works. The tutorial also introduces you to important health insurance related terms and phrases that are important to remember.

You will also be given instructions on how to retrieve your health insurance card (carte Vitale)

- Bring this whenever going to the doctor, the hospital, dentist, or to the pharmacy
- If you have not received your carte Vitale yet, don't worry! Your 'attestation d'affiliation à la sécurité sociale' is a valid document and it will be accepted by health care providers.

After completing your online registration (see above), you will be provided with a social security number « numéro de sécurité sociale » that is found in the proof of social security membership « attestation d'affiliation à la sécurité sociale ». In case of illness or an accident, your expenses will be reimbursed (to your French bank account)

- NB : On average, social security covers about 70% of the medical expenses

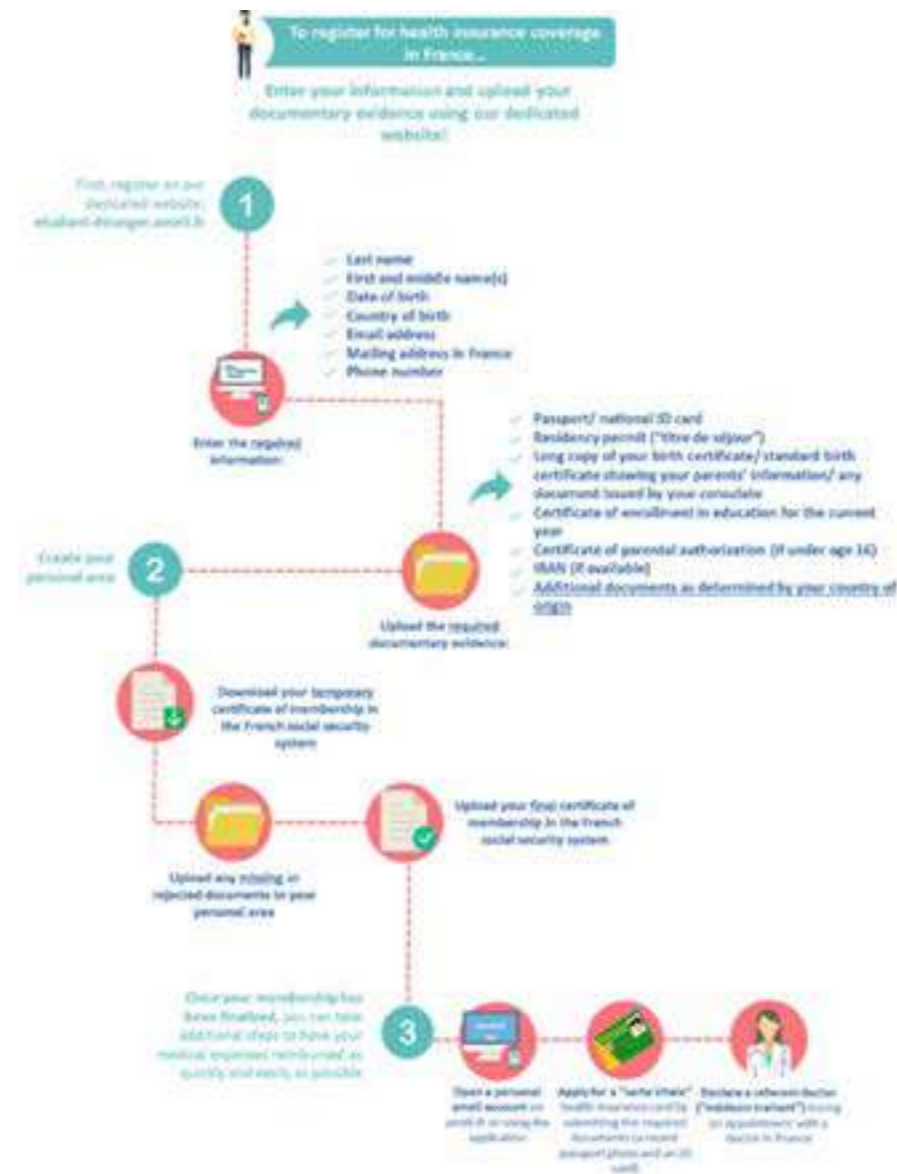


IMPORTANT NOTE

The entire process can take some time, but there's no need to panic. You will be provided with a temporary proof of social security membership « attestation provisoire d'affiliation à la Sécurité sociale » after your online registration. Your coverage is backdated from the date you completed your registration at your higher education institution. Your health and medical expenses will be covered starting that date (even if you have not yet received your carte Vitale).



The Healthcare System of France
Healthcare Triage © 413 k abonnés



3. Students from the 27 member states of the European Union

They are eligible for this cover as long as they have a **European Health Card (E111)** issued by the Social Security office in their country of origin before their visit to France. This system covers any possible health expenses and requests for refunds submitted to the "Caisse d'Assurance Maladie du Nord Finistère" (local Health and Social Security office for Brest).

A copy of this European Health Card is to be given to our Accountancy Department.

NB: It's strongly recommended to subscribe to an international insurance covering civil liability and medical repatriation.

4. What is the European Health Insurance Card?

A free card that gives you access to medically necessary, state-provided healthcare during a temporary stay in any of the 28 EU countries, Iceland, Liechtenstein, Norway and Switzerland, under the same conditions and at the same cost (free in some countries) as people insured in that country.

The European Health Insurance Card:

- is not an alternative to travel insurance. It does not cover any private healthcare or costs such as a return flight to your home country or lost/stolen property,
- does not cover your costs if you are travelling for the express purpose of obtaining medical treatment,
- does not guarantee free services. As each country's healthcare system is different services that cost nothing at home might not be free in another country.

5. Non-European Union students under 28 years old

Registration with the French Social Security System is compulsory for all non-European Union students under 28 years old. This should be purchased upon your arrival at Brest Business School.

NB: You will be asked to provide a recent & certified translation of your birth certificate in order to register.

A copy of your international insurance (in English or French) covering civil liability and medical repatriation is required.

Travel insurance covering loss or theft of personal belongings is strongly recommended.

LIFE IN BREST

BREST BUSINESS SCHOOL

LIFE IN BREST



Brest is a resolutely modern, dynamic city, in perpetual motion. Located in a sheltered position near the Western tip of the Brittany peninsula (North-West France), Brest enjoys an exceptional setting and a mild marine climate.

Our city is well connected to France and the world through its international Brest Bretagne airport, an excellent highway access to Paris and Nantes, highspeed train (TGV) service and easy links to the United Kingdom and the rest of Europe.

THE CITY inafewkeyfigures

Brest is one of the leading regions in Europe in the food and drink sector, naval activities, fishing, music production, tourism, publishing and logistics.

Thanks to its multidisciplinary university, Brest offers a wide range of higher education choices that can lead to top-end job opportunities in fields such as marine science and technology, health care, electronics and digital technology, for which Brest has earned national and international renown.

Brest hosts more than 30 000 students per year – you will always feel yourself a part of a lively students society here!



+31 000 students

2nd university of
city Brittany

+3 100 international students

5 sectors of excellence
and future Sea and Coast, Digital, Defense and Security, Health, Agri-Agro-Bioeconomy

©Emmanuel Berthier

FOCUS ON

« La pointe du petit Minou »

THE LIGHTHOUSE

The journey begins on the dike that leads to the lighthouse. As you advance towards the rocky point, the harbor is revealed before your eyes while the waves slap under your feet. At the end of the path, the lighthouse, 26 meters high, watches over you, day and night. It is only open to visitors in summer, the rest of the year you can walk around it and admire the panoramic view while breathing in the iodized scents of the Iroise Sea.

SURFING

Whether you are aiming for your first take off or you already have a few waves under your belt, the Minou spot is perfect for those who love to ride in an exceptional natural setting.



© Eugénie Ragot



THE WALK ON THE TRAIL

From the beach of « petit Minou », two possibilities: on the left, direction Brest, you go along the Narrows and enjoy the exceptional view on the bay. On the right, you answer the call of the open sea by heading towards Le Conquet. In both cases, you will enjoy the incredible view of the Crozon peninsula, just in front of you, and the spectacle of the boats coming back to the port.

ADDRESS BOOK



THE BEST NEIGHBORHOODS to party in

COMMERCIAL PORT

at the Oyster bar, where you can taste oysters but especially sumptuous cocktails.

MARINA DU MOULIN BLANC

Le Tour du Monde, the bar created by Olivier de Kersauson, which gives a crazy desire to take the sea.

MARINA DU CHÂTEAU

and its restaurant-bar «La Base» with a breathtaking view on the port and the harbour !

CULTURE & LEISURE

Brest Métropole

Océanopolis

Océanopolis, national center of scientific culture dedicated to the ocean, promises you a unique journey! To change the way you look at the ocean, to be aware of the preservation of its biodiversity and to better preserve it, we offer you a journey through 77 aquariums and 4 marine spaces: Brittany, tropical, polar and the otter trail, which faithfully reconstruct the different habitats of the thousand species presented.

www.oceanopolis.fr

CLIMB UP BREST

Climb Up Brest adds height to the Ateliers des Capucins! Up to 16.5m for the highest verticals. The innovative concept of Climb Up, the largest indoor climbing space in France, has a particular resonance at the Ateliers, where all three Olympic disciplines are present (rope climbing, bouldering and speed climbing).

LES ATELIERS DES CAPUCINS

A true technical and architectural feat, the Ateliers des Capucins is a magical place: a formidable cradle of 35,000 m² flooded with light thanks to the 200 bay windows and the immense skylights that cover the large naves. Media library, reading gardens, a space for relaxation and discovery, stores, restaurants, cinema, numerous events, etc.

BOWLING LE MASTER

Relaxation and fun for the whole family. 16 bowling lanes in a leisure complex, 16 billiards, 2 ping-pong tables, 3 dart machines and 2 private karaoke boxes. Please contact us for more information about these events or by phone.



RUE ST-MALO

A stone's throw from «Les Capucins», the street St-Malo, miraculously spared by the bombings, is the only street offering the charms of pre-war Brest: irregular sandstone cobblestones, 18th century houses. It regularly hosts live shows. To be discovered for its originality and its historical symbol... A few steps away, go to the café «Au coin d'la rue» for a cultural and gourmet break!

MULTIPLEXE LIBERTÉ (CINÉMA)

The team of the Multiplexe Liberté, located in the center of Brest, welcomes you every day in its 15 theaters. You can regularly attend special screenings (previews with film crews, opera, ballet, theater and concert broadcasts, documentaries, special screenings for young audiences...).

LE QUARTZ

Le Quartz is France's leading national theater for its public attendance. Located in the heart of the city, it is a place for the production and artistic dissemination of contemporary performing arts.

60 Rue du Château, Brest

RINKLA STADIUM

The Rinkla, the ice rink of the great west in Brest ! Open all year round to the public, the Rinkla is the ideal place to have a great time with family or friends. Meeting international standards, it can accommodate up to 1500 spectators.

1Rue de Savoie, Brest

HAVE A DRINK

DELIRIUM CAFÉ

Let yourself be charmed by this atypical and warm bar which is the ideal meeting place for beer lovers! You will find what you are looking for among the 24 drafts and 150 bottles. As a bonus, discover our small restaurant (burgers, waffles, aperitif boards).

1 rue Jean-Marie Le Bris, Brest

HAVE A MEAL

MARCELLE ET MORRIS

With family, friends or for a company meal, «Marcelle et Morris» welcomes you with its sea view terrace to enjoy a gourmet burger or a Poké-Bowl, a 500 gr Black Angus steak or a traditional fish & chips. 100% home made !

115 quai Éric Tabarly, Brest

SHOPPING

COAT AR GUEVEN

This shopping mall opened on 2 levels shelters 30 brands. Primark, McDonald's, Yves Rocher, André, etc. can be found there.

50 rue Jean Jaurès, Brest



LA CARÈNE

Located in the commercial port of Brest since 2007, La Carène is the venue of Brest Metropole for contemporary music. Its two concert halls, its 6 rehearsal studios and its information-resource center make it a unique facility in Brittany.

30 rue Jean Marie le Bris, Brest

SPADIUM PARC

The establishment consists of an aquatic area with 4 swimming pools and a wellness area. Numerous recreational facilities are available and many aquatic activities are scheduled: swimming lessons, water garden, aquabike sessions, etc.

Bd Léopold Maissin, Relecq-Kerhuon

ARÉNA (BRASSERIE SPORTIVE)

It's the resto-bar to watch your favorite sport on a giant screen, enjoy our delicious menu, celebrate a victory, a birthday or simply eat a good meal facing the pontoons of the Marina du Château.

195 quai Éric Tabarly, Brest

CRÊPERIE MODERNE

Creperie of character founded in 1922, held by the Boënnec family for 4 generations. Made in the traditional way, our pancakes are generously filled and buttered before your eyes. For 100 years, we have been welcoming you in an atypical decor mixing tradition and the 50's!

34 rue Algésiras, Brest

ESPACE JAURÈS

This shopping mall is organized on 3 levels and has a parking lot and a space dedicated to children. Izee, Fnac, Nature & Découvertes, Mango, H&M, Celio, etc. can be found there.

65 Rue Jean Jaurès, Brest



L'ARÉNA

The Brest Arena is a sports and event venue with a capacity of 2,000 to 5,000 seats, located in Brest, France. Inaugurated on September 13, 2014, its purpose is to host both major sports competitions, team trainings, and large-scale concerts.

140 Boulevard de Plymouth, Brest

FINE ARTS MUSEUM

The museum of fine arts is the main art museum in the city of Brest. The museum and its collections were recreated after World War II, as the museum was destroyed along with most of the city during its bombing by Allied forces.

24 Rue Trav., Brest

LE TOUR DU MONDE

A bar-restaurant with a panoramic view of the port and the harbor. Throughout the day, an incredible variety of clientele mixes together: families, friends... The only constant is that the atmosphere becomes more intense every Friday and Saturday night from 11 pm.

Port de plaisance du Moulin Blanc

LOCO LOCA

Tropical air current in Brest, welcome to Loco Loca ! A latino place for a brazilian coffee, an authentic cocktail, a latino restaurant for lunch and dinner or to enjoy our tapas bar, open continuously ! The decoration and the 900 m2 garden will make you travel to Cuba, Buenos Aires or Santiago !

207 rue Jean Jaurès, Brest

GÉANT

Ideally located only 10 minutes north-east of the city center of Brest in Brittany, the shopping center La Galerie Le Phare de l'Europe welcomes you on more than 35400m². Your shopping mall gathers more than 70 stores and services for your shopping sprees with family or friends

29 rue de Gouesnou, Brest

APPENDICES

BREST BUSINESS SCHOOL

ONLINE ENROLMENT PROCEDURE

For international exchange students

STEP 1

Please connect to the following link to start the procedure:

<http://exchange-student.brest-bs.com>

Exchange students MUST apply online to enroll with Brest Business School. Please follow the screens by clicking on "Connect" and «Submit» whenever necessary.

STEP 2

Fill in the forms as kindly requested by our application.

STEP 3

You are nearly there!

STEP 4

That once your online registration has been successfully completed, you will still have to fill in an additional Application form. Please print this Application form and once it has been duly signed and sealed by your Tutor/International office return one scanned copy to the following address : nelly.plouzenec@brest-bs.com



CONNECT

Enter a user name and a password. If you do not have an account, [click here to create one](#)

Account information:

Email:

Password:

[Forgot your password?](#)



PERSONAL INFORMATION

Name (with last name):

First name:

Last name:

Address:

City:

Country:

Phone number:

E-mail address:

University programme that you are enrolled in:

Year of study:

Year of entry into the program:

Program:

Age:

Code:

Email BBS: (Required, Email BBS only)

Username:



Welcome

My situation

Program: Programme Grande Ecole BBS

Year of entry into the program: 20

[click here to extract the student card in pdf format](#)

Age: 22 ans

Code:

Email BBS: (Required, Email BBS only)

Username:

UNFLOW print budget: 30.00 credits remaining



ONLINE ENROLMENT PROCEDURE

For international degree seeking students

STEP 1

All international degree-seeking students MUST enroll online. Please connect using the login and password you have been given by our IT department:

<http://talentdays.brest-bs.com/>

Please follow the screens of our application by clicking on "Connect" and "Submit" whenever necessary.

STEP 2

Please provide your profile details by filling in the screens.

STEP 3

Your enrolment at Brest Business School is now complete. Congratulations!

STEP 4

Whilst your online enrolment has been successfully completed, you may still contact our International Recruitment Officer : dri@brest-bs.com



Welcome

My situation

Program: Programme Grande Ecole BBS

Year of entry into the program: 20

[click here to extract the student card in pdf format](#)

Age: 22 ans

Code:

Email BBS: (Required, Email BBS only)

Username:

UNFLOW print budget: 30.00 credits remaining



BBS ACADEMIC CALENDAR*

2024-2025

UNDERGRADUATE PROGRAMS

BACHELOR IN MANAGEMENT

1st SEMESTER (Fall)**	2nd SEMESTER (Spring)**
BIM 1 Sep 16, 2024 Dec 20, 2024	BIM 1 Jan 6, 2025 April 18, 2025
BIM 2 Sep 16, 2024 Dec 20, 2024	BIM 2 Jan 6, 2025 April 18, 2025
BIM 3 Sep 16, 2024 Dec 20, 2024	BIM 3 Jan 6, 2025 April 18, 2025



GRADUATE PROGRAMS

MASTER IN MANAGEMENT

1st SEMESTER (Fall)**	2nd SEMESTER (Spring)**
MIM 1 Sep 16, 2024 Dec 20, 2024	MIM 1 Jan 27, 2025 June 13, 2025
MIM 2 Sep 16, 2024 Dec 20, 2024	MIM 2 Jan 27, 2025 June 13, 2025
MIM 3 Sept 09, 2024 Jan 24, 2025	MIM 3 Jan 27, 2025 June 06, 2025

PUBLIC HOLIDAYS

2024
 All Saints Day: November 1
 Armistice Day: November 11
 Christmas Day: December 25

2025
 New Year : January 1
 Easter Monday: April 21
 Labour Day : May 1
 WWII Victory Day : May 8
 Ascension Thursday: May 9
 Pentecost Monday : May 20
 National Day : July 14
 Assumption : August 15
 Armistice Day : November 11
 Christmas Day : December 25



* Subject to change.

MASTER OF SCIENCE INTERNATIONAL BUSINESS

- MIB** • Start date for 15 months program: September 09, 2024 / January 06, 2025
- Start date for 20 months program : Feb 2025
- Including a double degree trip to Ireland in April 2025

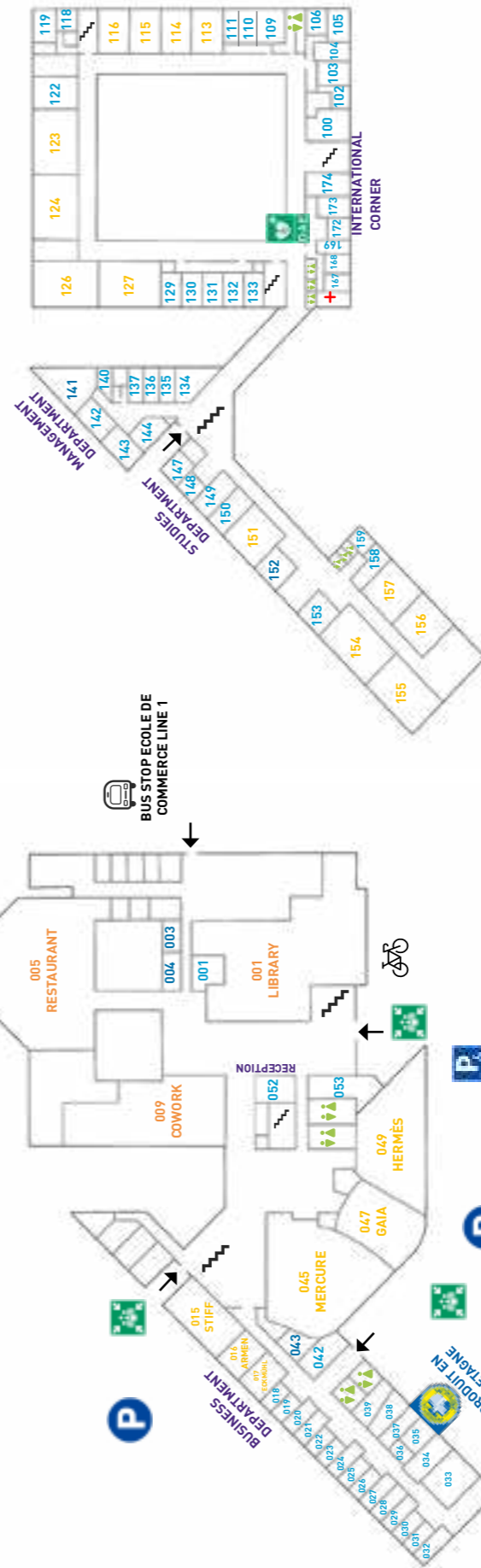
MS PROGRAMS: COURSES + INTERNSHIP

- MS** • Specialized Mastère in Management Control: All year long, starts regularly
- Specialized Mastère in Logistics Supply Chain: All year long, starts regularly
- Specialized Mastère in Finance: All year long, starts regularly

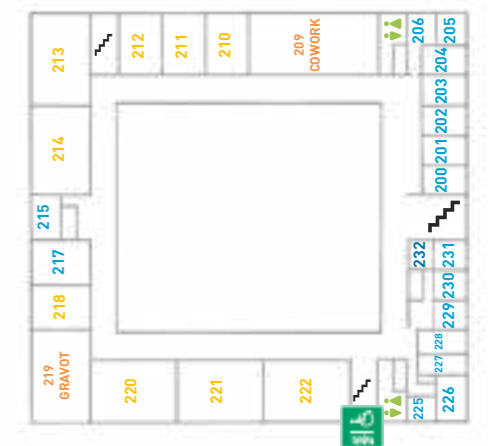
SCHOOL MAP

GROUND FLOOR

1ST FLOOR



2ND FLOOR



CAPTIONS

- Common space
- Room
- Office
- Meeting room
- Emergency exit meeting point
- Car park
- Bike park
- Entrance
- Bathroom
- Stairs
- Sick Bay
- Defibrillator
- Parking for people with disabilities
- Safe waiting zone

HOW TO GET TO BREST

BY PLANE

Brest is connected with the rest of Europe by an international airport: Brest-Bretagne (BES).

Brest is only one-hour flight from Paris (approximately 8 flights per day: 3 flights from Roissy Charles de Gaulle - CDG and 5 flights from Orly - ORY). Other direct flight destinations include Nantes, Lyon, Nice, Marseille, Toulon, Birmingham, Exeter and Southampton, etc.

Brest airport operates many airline companies such as Air France, Easy Jet, Ryanair, Vueling.

More details on: <https://www.brest.aeroport.bzh/accueil>

AIRPORT SHUTTLE

A shuttle service and a tram line link Brest Bretagne airport and Brest city center several times a day. First, take **the bus Line 20 from the airport** just outside the terminal and get off at the tram station. Second, take the tram, which takes you directly to the city centre.

Brest Business School and the Centre de Mobilité Internationale de Brest (CMI) / Brest International Mobility Center have signed a partnership agreement whereby BBS international students can ask for a Free Meet & Greet service from CMI. Please click on the following link to benefit from this **FREE «Meet & Greet service in Brest»**.

BY TRAIN

There are 5 daily trains running from Paris Charles de Gaulle airport to Brest (layover in Rennes).

For more information visit: <https://www.sncf.com/en>

BY CAR

Brest is 580 kilometers from Paris, 254 km from Rennes, 145 km from Lorient and 145 km from Saint-Brieuc.

The main itineraries reach Brest from the East (Rennes) or from the South (Nantes).



PUBLIC TRANSPORTATION

BY BUS

The best way to reach the city center is to take the bus. There are 22 lines all around the city, during the weekdays till 22:40, on Friday and Saturday until 00:40. You can buy tickets at Bibus desk, the public transport network of Brest Metropole, or [on their website](#).

To go to Brest Business School you can take lines 1 or 5 from «Place de la Liberté».

- If you take line 1 in the direction of Hôpital Cavale, you can get off at «École de Commerce».
- If you take line 5 in the direction of Provence, you need to get off at «Gascogne» and walk about 2 minutes to the school.

BY TRAM

The Tramway links Porte de Plouzané to Porte de Gouesnou or Porte de Guipavas.

TAXI SERVICES

BREST TAXI 806
02 98 80 68 06
<http://www.taxi806.com/fr/>

TAXIS BRESTOIS
02 98 80 18 01
www.taxisbrestois.com

TAXIS DES KORRIGANS
06 99 97 80 00
www.taxi-brest-korrigans.fr

Points of interest around Brest:

You can use the public transportation to visit the region. All the itineraries and prices are available on: <https://www.breizhgo.bzh/>

It's also possible to visit islands (Ouessant, Batz, Molène...) from Brest. Boat fares and schedules are available on: www.pennarbed.fr

If you wish to have more information about the city visit the tourism information office website: <https://www.brest-metropole-tourisme.fr/>



USEFUL INFORMATION

Supermarkets

You will find some supermarkets in town. You can find below a non-exhaustive list of different supermarkets in Brest.



E.LECLERC
16 rue de la 2ème DB
29200 BREST
02 98 44 56 45
Open from Monday to Saturday



CARREFOUR
126 Boulevard de Plymouth,
29200 Brest
02 98 31 42 79
Open from Monday to Saturday



CARREFOUR CITY
10 Place Maurice Gillet
29200 Brest
02 98 46 00 14
Open from Monday to Sunday



SUPER U
17 Rue Cuirassé Bretagne
29200 Brest
02 98 47 74 11
Open from Monday to Saturday

For more information on contacts refer to :
<http://brest-bs.com/lecole/vie-etudiante/>

Other

EMERGENCY SERVICE IN FRANCE :

- Police : 17
- Fire/Ambulance : 18
- First Aid/Ambulance : 15
- European emergency service : 112



ESTIMATED COST OF LIVING IN BREST

The approximate estimated cost of living for a student in Brest can be broken down as following:

Accommodation:

500€ - 600€
/month (approx.)

BBS

restaurant:

7.00€ (approx.)

University

restaurant:

3.33€ (approx.)

Daily expenses including food, transport, etc:

200€ /
month

Compare the cost of living in your city and in BREST :

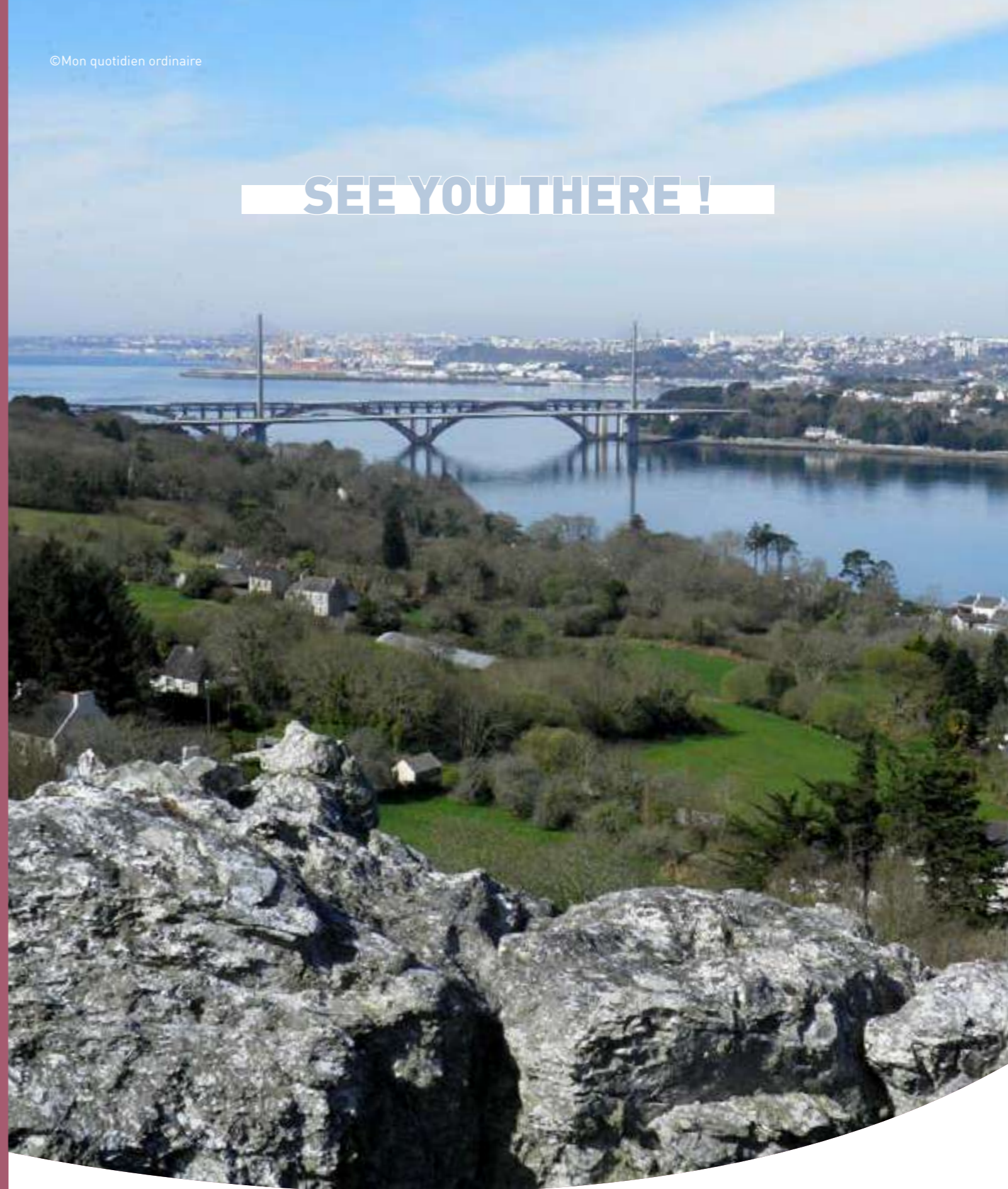
CLIC

Campus France | BREST :

[More informations about Brest](#)

© Mon quotidien ordinaire

SEE YOU THERE!



contact@brest-bs.com



02 98 34 44 44



brest-bs.com



brest.bs